



FRANCISCA

FOR AQUACULTURE & MARINE CONSTRUCTION PROJECTS

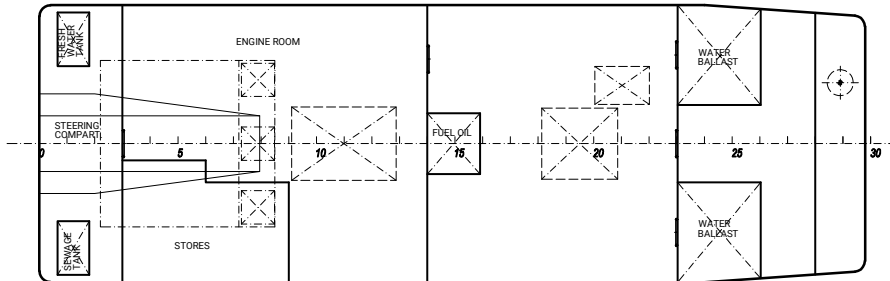
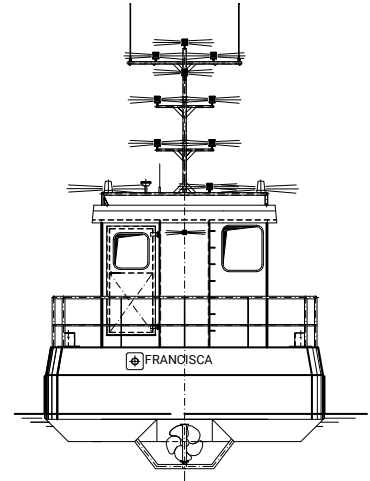
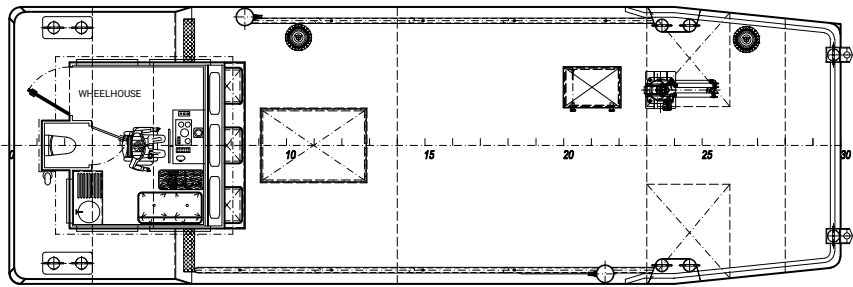
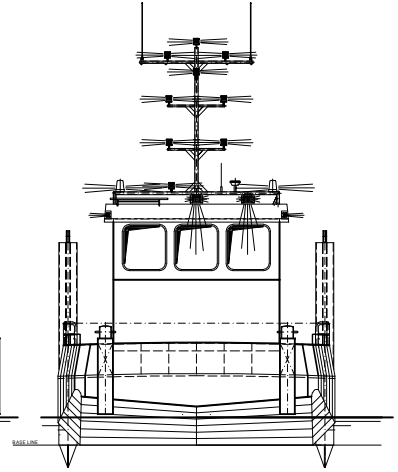
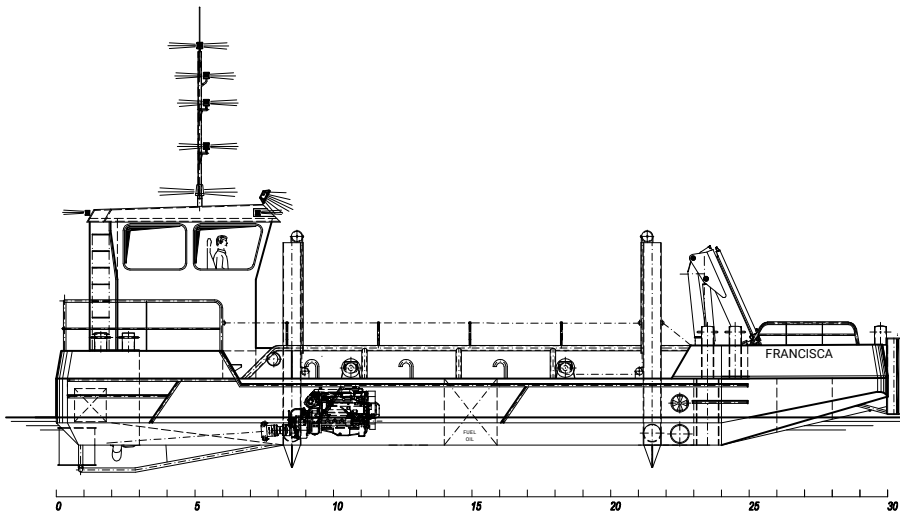


Multiship 1500 - Multipurpose vessel with hydraulic crane and capstans



MAIN PARTICULARS	
Type	Multiship 1500
Dimensions	14.95 x 5.00 x 1.20m
Engine	Deutz 220HP, 175KW
Shipyard	Mansvelder/ESB (Netherlands)
Construction Year	2009/2010
Certification	UK Workboat Code Category 3
EQUIPMENT	
Crane	Heila HLM 3-2S, New 2018
Capstans	2x Tenfjord 2T
Moon Pool	600mm Diameter
Spud Poles	Telescopic, 7m
Bowthruster	17KW
Deck Wash	Electric driven

AUXILIARIES	
Generator	Hatz 20 KVA
Hydraulics	Hatz powerpack
Shore Power	Yes
NAVIGATION	
GPS Navigator	Navicom
Echosounder	Navicom
VHF	2x VHF DSC
Radar	Radio Holland
Other	AIS Class B
ACCOMMODATION	
Facilities	Comfortable, modern wheelhouse with galley area and toilet
Air Conditioning	Yes
Other	Sun blinds



MULTISHIP 1500	
Length OA:	15.24 m
Length WL:	14.90 m
Breadth:	5.00 m
Depth:	1.20 m
Design draft:	1.20 m

FRANCISCA

Multiship 1500. Multipurpose vessel with hydraulic crane and capstans

ISLE OF SKYE

For more information please contact us

E: info@maraiche.scot

T: 01471 844722

W: www.maraiche.scot

